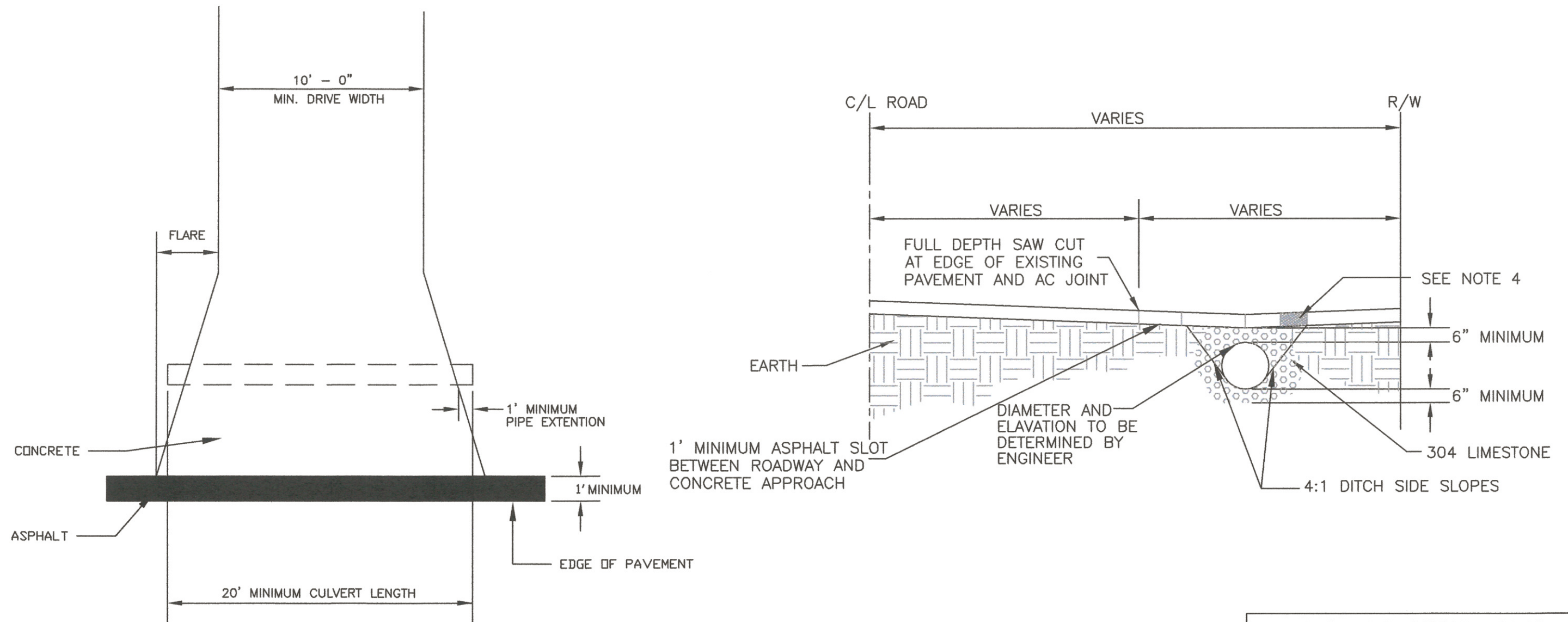


NEW CULVERT INSTALLATION (ASPHALT RD WITHOUT SIDEWALK)



1. PERMIT MUST BE OBTAINED AT BUILDING DEPT.
2. OWNER/CONTRACTOR MUST NOTIFY CITY OF STOW ENGINEERING DEPARTMENT 72 HR PRIOR TO INSTALLATION IN ORDER TO DETERMINE THE ELEVATION AND SIZE OF THE CULVERT TO BE INSTALLED.
3. OWNER/CONTRACTOR MUST CONFIRM WITH THE CITY OF STOW ENGINEERING DEPARTMENT, A MINIMUM OF 24 HOURS IN ADVANCE TO THE SCHEDULED INSTALLATION INSPECTION.
4. RESIDENTIAL - 6" MIN. CONCRETE APPROACH REQUIRED WITH 3' STANDARD FLARE.
COMMERCIAL - 8" MIN. CONCRETE APPROACH REQUIRED AND FLARE APPROVED ON SITE PLAN.

CITY OF STOW, OHIO ENGINEERING DEPT.	
CONSTRUCTION STANDARD	
DRAWN BY: MJJ DATE REVISED: 3/3/16	
CITY ENGINEER: <i>James D. McCleary</i>	
DATE: <u>3/4/16</u>	
DWG FILE: SDS-4	N.T.S.