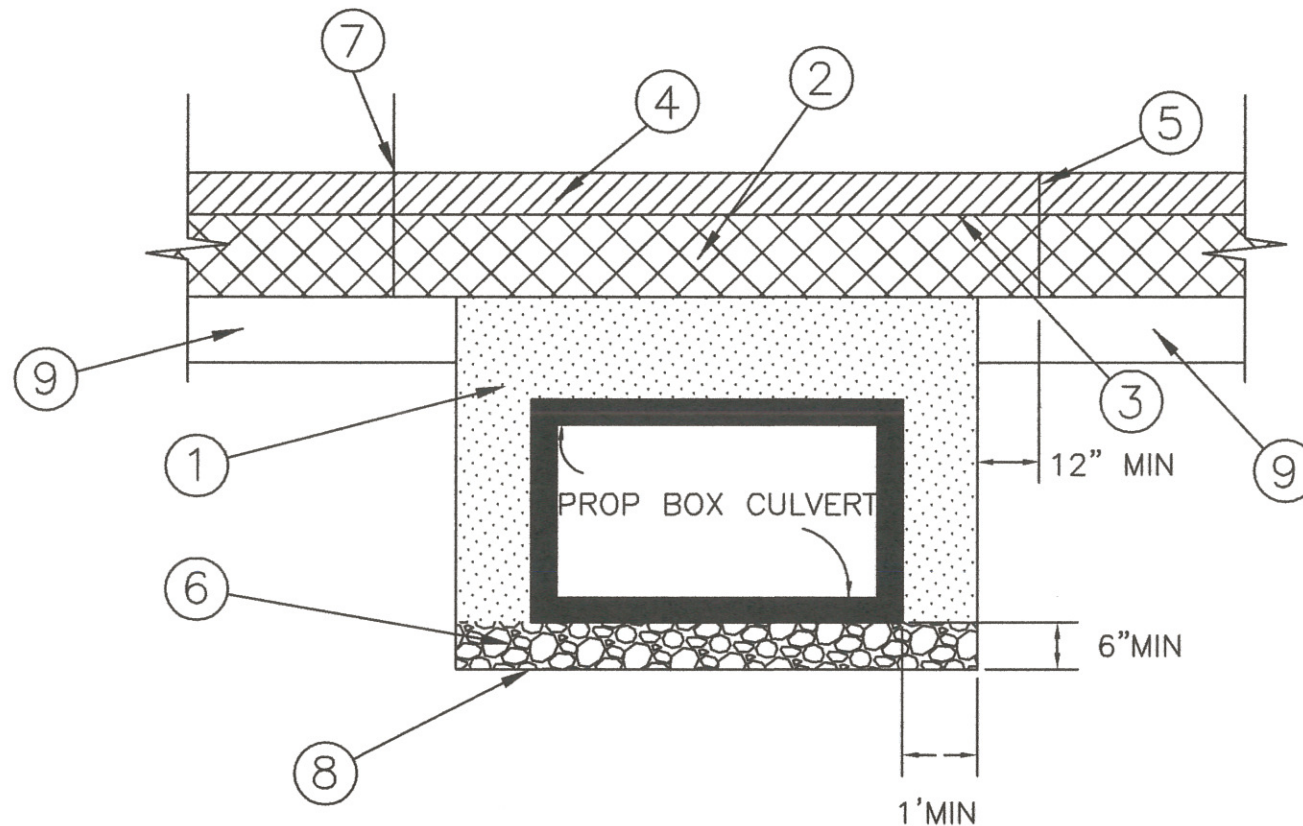


ASPHALT STREET RESTORATION FOR BOX CULVERT



- ① - ODOT ITEM 304 VIRGIN LIMESTONE COMPACTED TO 100% STANDARD PROCTOR TEST OR LSM TYPE 2 (100#) MAY BE ALTERNATE AS APPROVED BY THE CITY OF STOW ENGINEER
- ② - 9.5" ITEM 301 ASPHALT CONCRETE BASE, COMPACTED IN TWO LIFTS MINIMUM, DEPTH TO MATCH EXISTING ASPHALT, IF GREATER.
- ③ - ITEM 407 TACK COAT AT 0.075 GAL/SY
- ④ - 2" ITEM 448, ASPHALT CONCRETE SURFACE COURSE TYPE 1, PG 64-22 LIMESTONE AGGREGATE, VIRGIN MATERIAL ONLY

- ⑤ - JOINT SEALER, AC-20 OR EQUAL PER ODOT 705.04
- ⑥ - 6" MIN. NO. 57 LIMESTONE BEDDING OR AS APPROVED DESIGN
- ⑦ - ALL JOINTS MUST BE FULL DEPTH SAW CUT PER O.D.O.T. 252 WITH DUST CONTROL BY WATER APPLICATION
- ⑧ - COMPACTED SUBBASE APPROVED
- ⑨ - 6" COMPACTED 304 LIMESTONE

CITY OF STOW, OHIO ENGINEERING DEPT.	
CONSTRUCTION STANDARD	
DRAWN BY: MJJ DATE REVISED: 3/4/16	
CITY ENGINEER: <i>James D. McCleary</i>	
DATE: <u>3/4/16</u>	
DWG FILE: SDR-5	N.T.S.