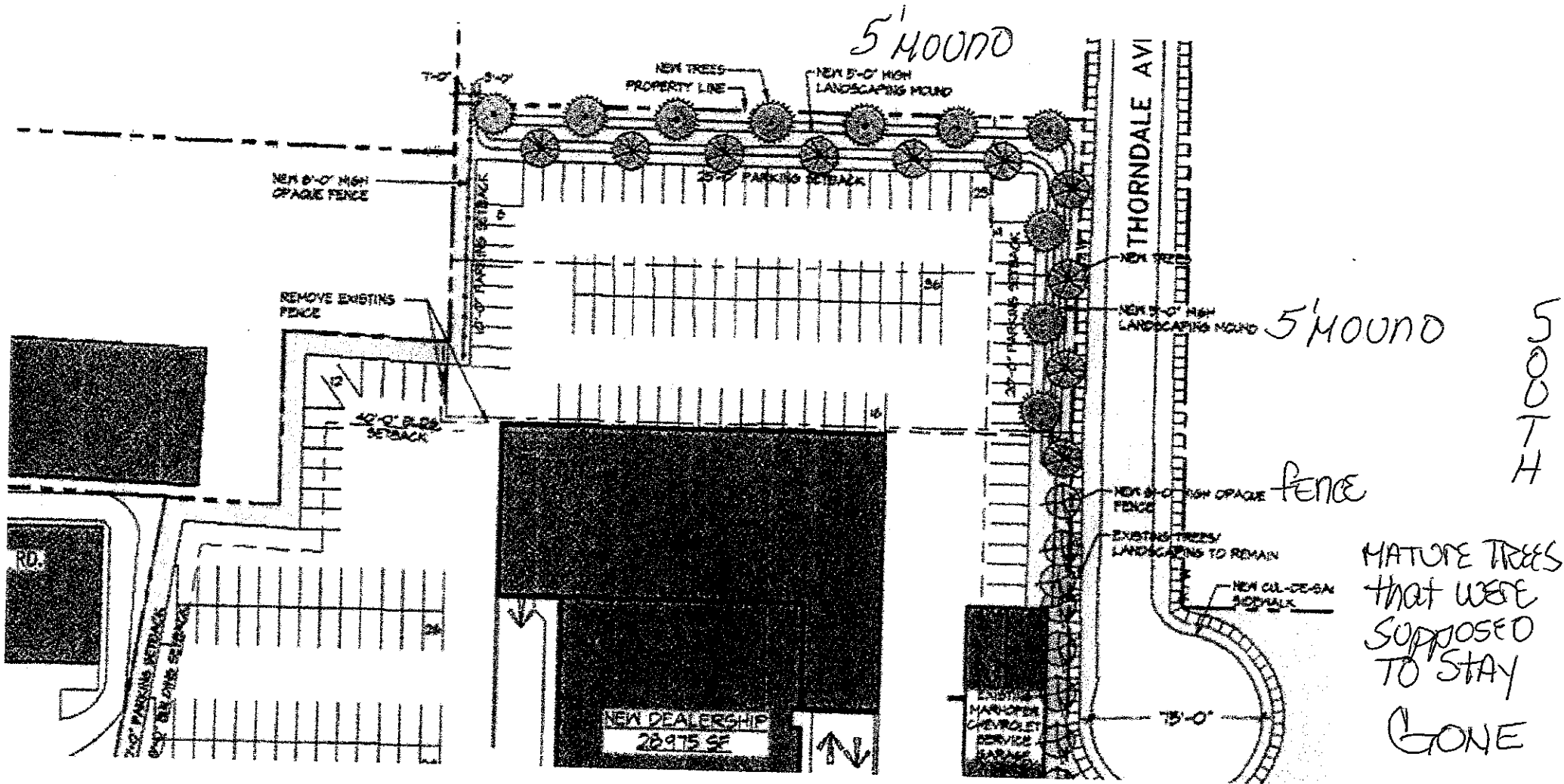


EAST



January 2016

SUNDAY	MONDAY	TUESDAY	WEDNESDAY	THURSDAY	FRIDAY	SATURDAY
					1 Holiday	2
3	4 Organizational Meeting	5	6	7	8	9
10	11	12	13	14 Committee and Council Meeting	15	16
17	18 Holiday	19	20	21	22	23
24	25	26	27	28 Committee and Council Meeting	29	30
31						

February 2016

SUNDAY	MONDAY	TUESDAY	WEDNESDAY	THURSDAY	FRIDAY	SATURDAY
	1	2	3	4	5	6
7	8	9	10	11 Committee and Council Meeting	12	13
14	15 Holiday	16	17	18	19	20
21	22	23	24	25 Committee and Council Meeting	26	27
28	29					

March 2016

SUNDAY	MONDAY	TUESDAY	WEDNESDAY	THURSDAY	FRIDAY	SATURDAY
		1	2	3	4	5
6	7	8	9	10 Committee and Council Meeting	11	12
13	14	15	16	17	18	19
20	21	22	23	24 Committee and Council Meeting	25	26
27	28	29	30	31		

April 2016

SUNDAY	MONDAY	TUESDAY	WEDNESDAY	THURSDAY	FRIDAY	SATURDAY
					1	2
3	4	5	6	7	8	9
10	11	12	13	14 Committee and Council Meeting	15	16
17	18	19	20	21	22	23
24	25	26	27	28 Committee and Council Meeting	29	30

May 2016

SUNDAY	MONDAY	TUESDAY	WEDNESDAY	THURSDAY	FRIDAY	SATURDAY
1	2	3	4	5	6	7
8	9	10	11	12 Committee and Council Meeting	13	14
15	16	17	18	19	20	21
22	23	24	25	26 Committee and Council Meeting	27	28
29	30 Holiday	31				

June 2016

SUNDAY	MONDAY	TUESDAY	WEDNESDAY	THURSDAY	FRIDAY	SATURDAY
			1	2	3	4
5	6	7	8	9 Committee and Council Meeting	10	11
12	13	14	15	16	17	18
19	20	21	22	23 Committee and Council Meeting	24	25
26	27	28	29	30		

July 2016

SUNDAY	MONDAY	TUESDAY	WEDNESDAY	THURSDAY	FRIDAY	SATURDAY
					1	2
3	4 Holiday	5	6	7	8	9
10	11	12	13	14 Committee and Council Meeting	15	16
17	18	19	20	21	22	23
24	25	26	27	28 Committee and Council Meeting	29	30
31						

August 2016

SUNDAY	MONDAY	TUESDAY	WEDNESDAY	THURSDAY	FRIDAY	SATURDAY
	1	2	3	4	5	6
7	8	9	10	11 Committee and Council Meeting	12	13
14	15	16	17	18	19	20
21	22	23	24	25	26	27
28	29	30	31			

September 2016

SUNDAY	MONDAY	TUESDAY	WEDNESDAY	THURSDAY	FRIDAY	SATURDAY
				1	2	3
4	5 Holiday	6	7	8 Committee and Council Meeting	9	10
11	12	13	14	15	16	17
18	19	20	21	22 Committee and Council Meeting	23	24
25	26	27	28	29	30	

October 2016

SUNDAY	MONDAY	TUESDAY	WEDNESDAY	THURSDAY	FRIDAY	SATURDAY
						1
2	3	4	5	6	7	8
9	10	11	12	13 Committee and Council Meeting	14	15
16	17	18	19	20	21	22
23	24	25	26	27 Committee and Council Meeting	28	29
30	31					

November 2016

SUNDAY	MONDAY	TUESDAY	WEDNESDAY	THURSDAY	FRIDAY	SATURDAY
		1	2	3	4	5
6	7	8	9	10	11	12
13	14	15	16	17 Committee and Council Meeting	18	19
20	21	22	23	24 Holiday	25 Holiday	26
27	28	29	30			

December 2016

SUNDAY	MONDAY	TUESDAY	WEDNESDAY	THURSDAY	FRIDAY	SATURDAY
				1	2	3
4	5	6	7	8 Committee and Council Meeting	9	10
11	12	13	14	15	16	17
18	19	20	21	22	23 Holiday	24
25	26 Holiday	27	28	29	30 Holiday	31

January 2017

SUNDAY	MONDAY	TUESDAY	WEDNESDAY	THURSDAY	FRIDAY	SATURDAY
1	2 Holiday	3 Organizational Meeting	4	5	6	7
8	9	10	11	12 Committees and Council Meetings	13	14
15	16 Holiday	17	18	19	20	21
22	23	24	25	26 Committees and Council Meetings	27	28
29	30	31				