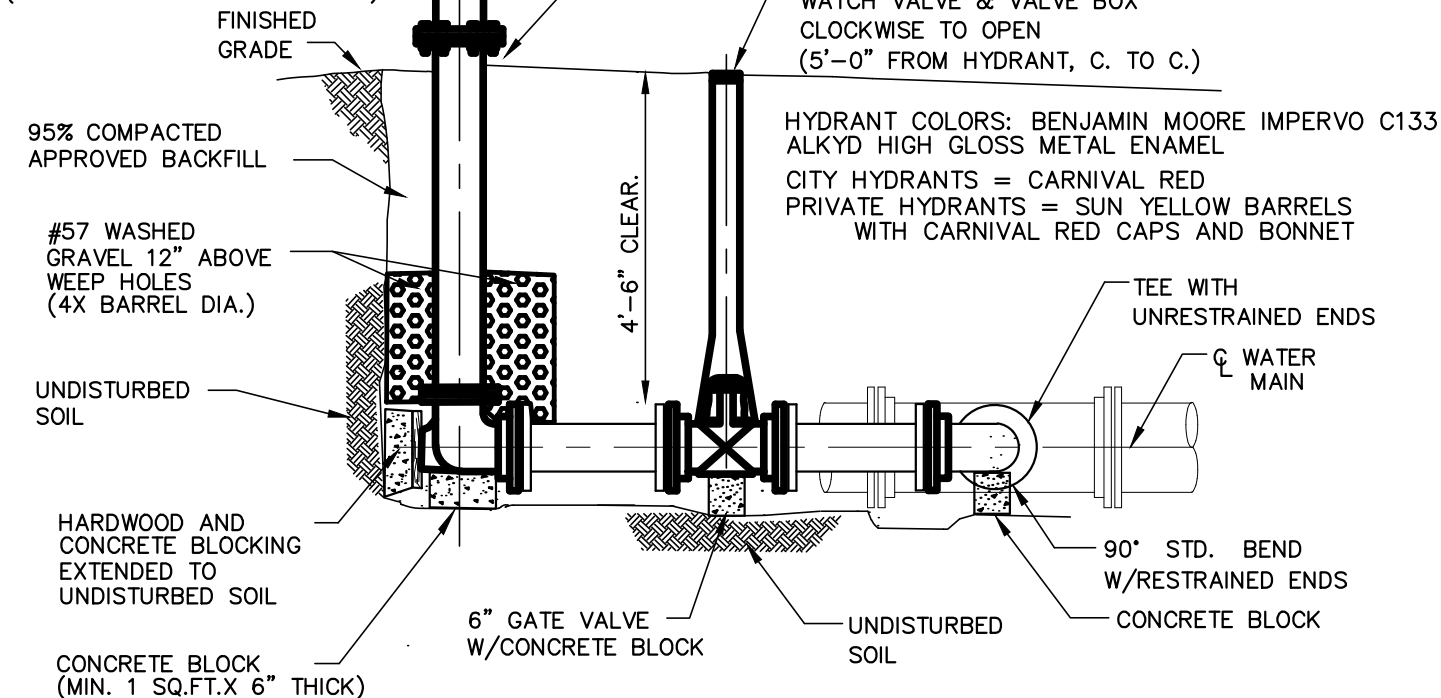


APPROVED HYDRANTS:
 AMERICAN B-84-B, OR
 MUELLER CENTURION
 A-423. ONE-4 1/4" STEAMER
 NOZZLE (SHALL FACE STREET)
 & TWO-2 1/2" HOSE, EACH
 NOZZLES WITH HIGBEE CUT
 6 THREADS/INCH THREADS
 BURY DEPTH = 5 1/2 ft.
 (MAX. HYDRANT SPACING=300')

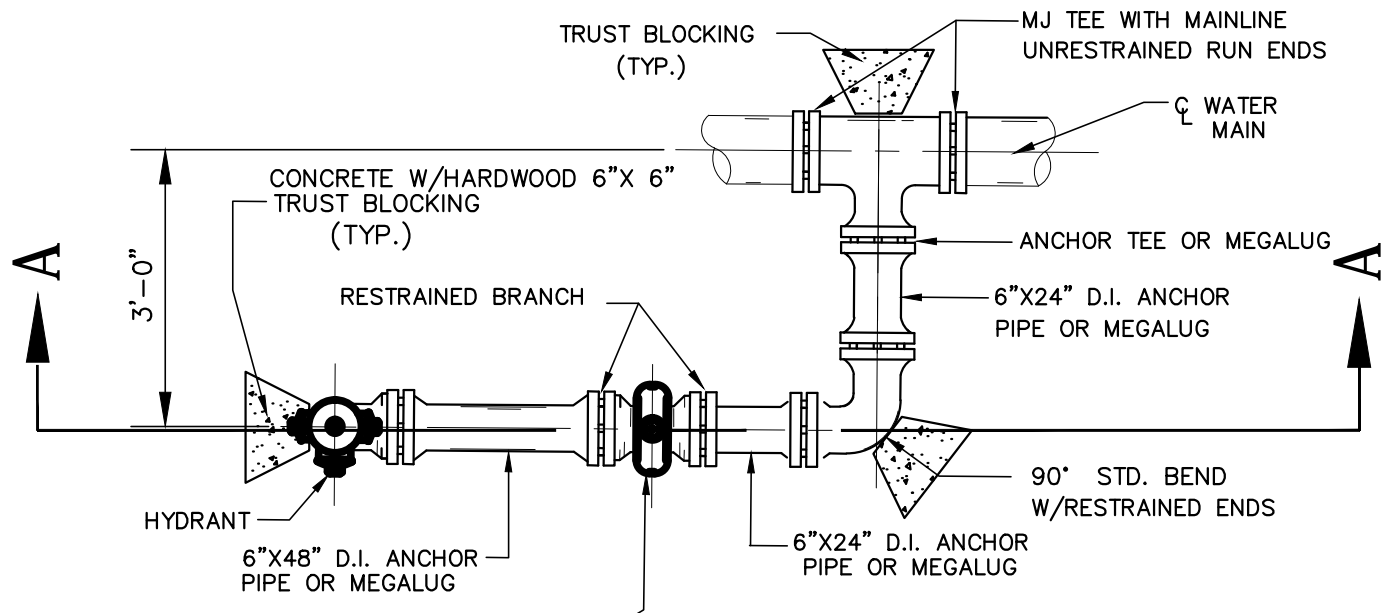
NOTE: RESTRAINED JOINTS MAY BE EITHER MECHANICAL
 JOINT WITH MEGALUG FOLLOWER GLAND OR
 ANCHOR PIPE.
 1 1/2" OPERATING NUT
 TURN COUNTER-CLOCKWISE TO OPEN



HYDRANT COLORS: BENJAMIN MOORE IMPERVO C133
 ALKYD HIGH GLOSS METAL ENAMEL
 CITY HYDRANTS = CARNIVAL RED
 PRIVATE HYDRANTS = SUN YELLOW BARRELS
 WITH CARNIVAL RED CAPS AND BONNET

SECTION A-A VIEW

PLAN VIEW



**PARALLEL HYDRANT RUN
 & INSTALLATION DETAIL**

CITY OF STOW WATER DEPARTMENT

DRAWN BY: TJS	APPROVED BY: <i>J. William Orw</i>
DATE: MAY, 2002	
REVISED:	
DRAWING NAME: SDW-1.DWG	MAY, 2002