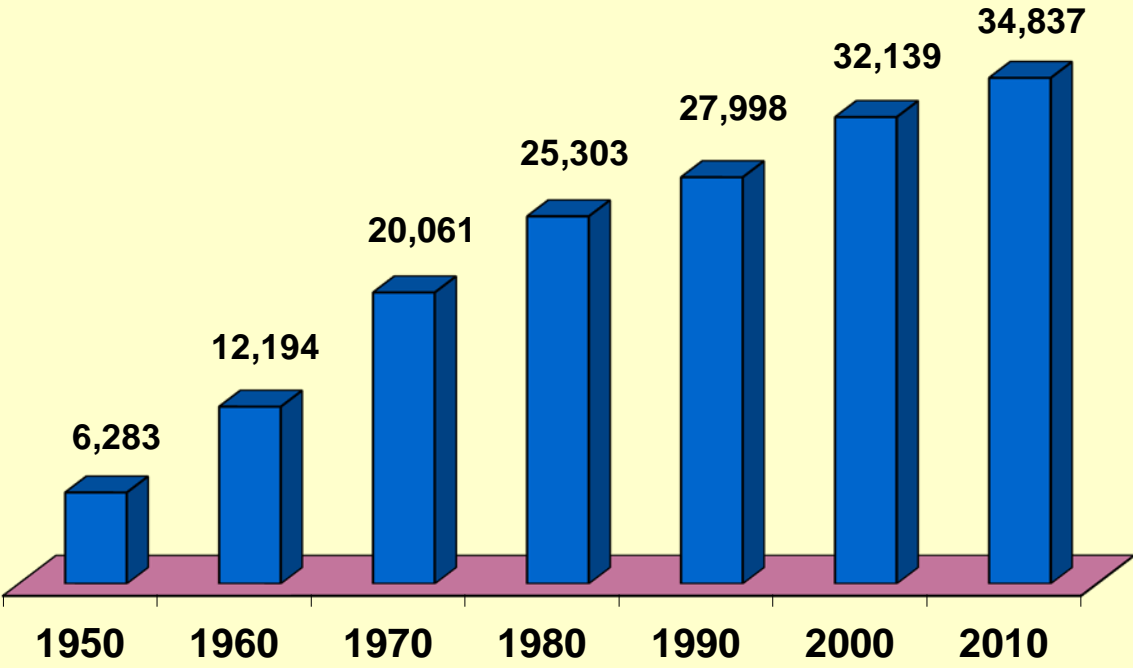


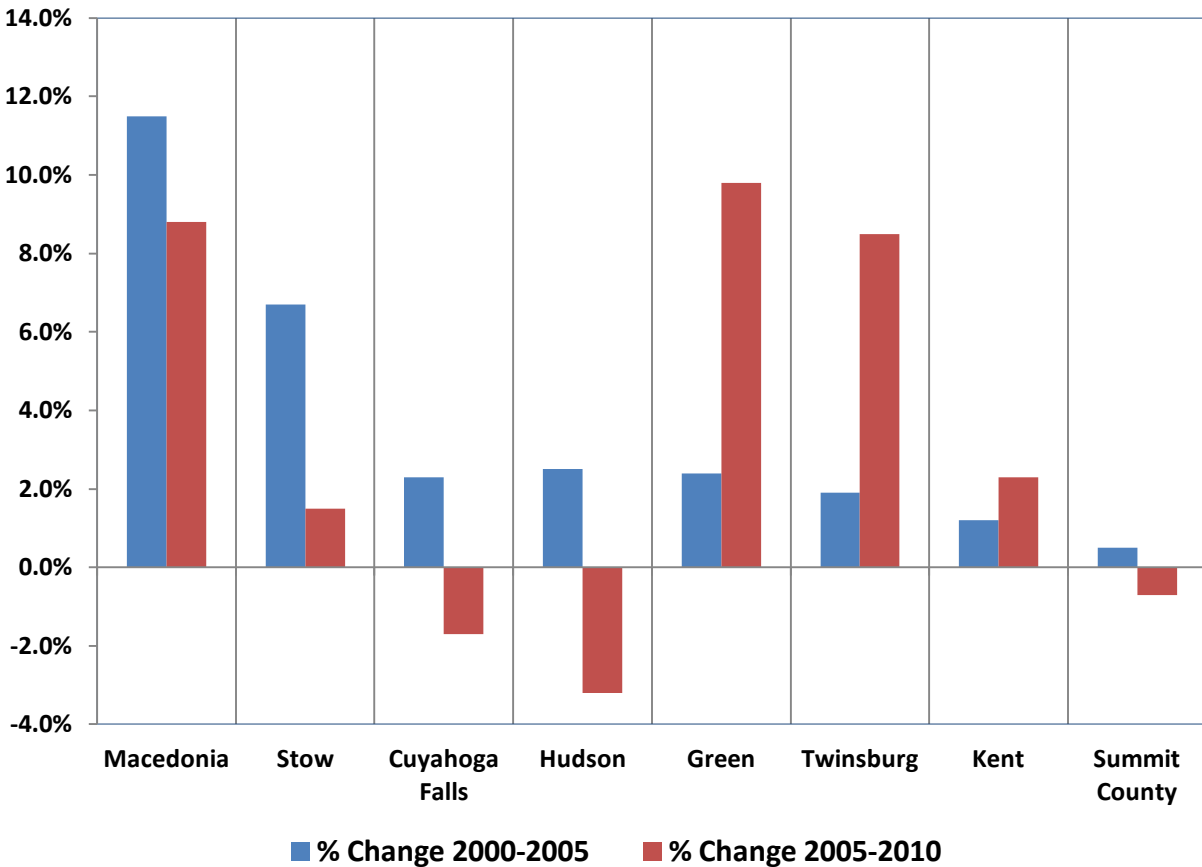
**City of Stow  
Population Growth 1950-2010**



*Source: U.S. Census*

## Population Growth 2000-2010 City of Stow & Surrounding Communities

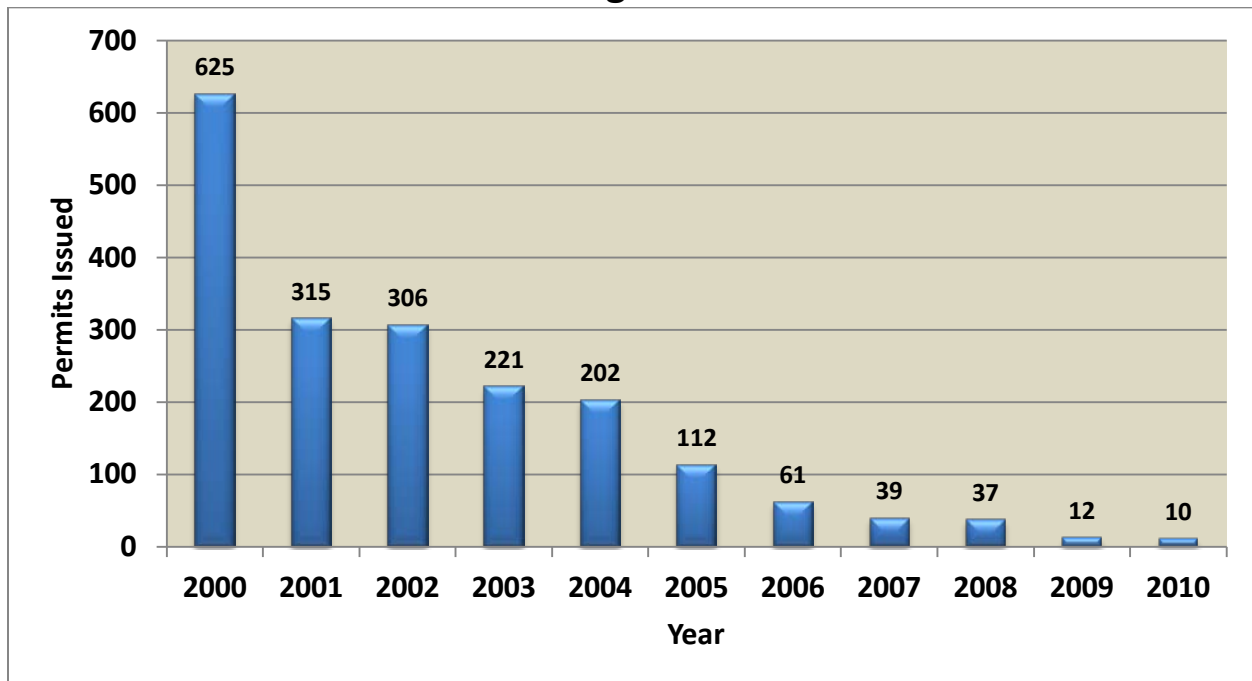
	Macedonia	Stow	Cuyahoga Falls	Hudson	Green	Twinsburg	Kent	Summit County
<b>2000</b>	9,224	32,139	49,374	22,439	22,856	17,006	27,906	542,899
<b>2005</b>	10,284	34,307	50,507	23,008	23,414	17,329	28,246	545,624
<b>2010</b>	11,188	34,837	49,652	22,262	25,699	18,795	28,904	541,781
<b>% Change 2000-2005</b>	11.5%	6.7%	2.3%	2.5%	2.4%	1.9%	1.2%	0.5%
<b>% Change 2005-2010</b>	8.8%	1.5%	-1.7%	-3.2%	9.8%	8.5%	2.3%	-0.7%



**City Of Stow**  
**Residential Dwelling Permits Issued (By Type) 2000-2010**

	2000	2001	2002	2003	2004	2005	2006	2007	2008	2009	2010	
<b>Single Family</b>	153	122	123	208	192	108	53	36	26	12	1	<b>1034</b>
<b>Single Family (Attached)</b>	57	37	37	13	10	4	8	3	11	0	9	<b>189</b>
<b>Two Family</b>	0	2	2	0	0	0	0	0	0	0	0	<b>4</b>
<b>Multi-Family</b>	415	154	144	0	0	0	0	0	0	0	0	<b>713</b>
<b>TOTAL</b>	<b>625</b>	<b>315</b>	<b>306</b>	<b>221</b>	<b>202</b>	<b>112</b>	<b>61</b>	<b>39</b>	<b>37</b>	<b>12</b>	<b>10</b>	<b>1940</b>

**City Of Stow**  
**Total Residential Dwelling Permits Issued 2000-2010**

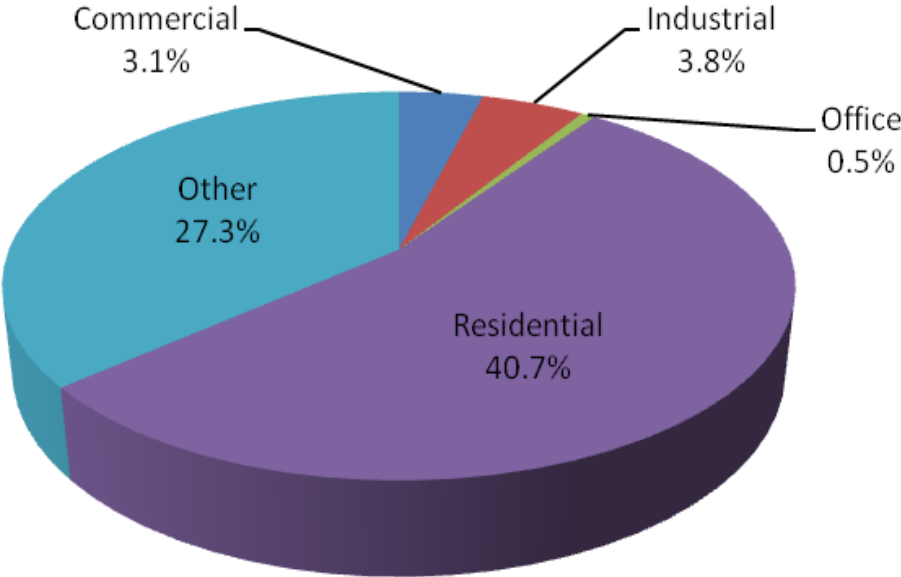


**City of Stow**  
**Land Allocation Comparison 1990-2009**

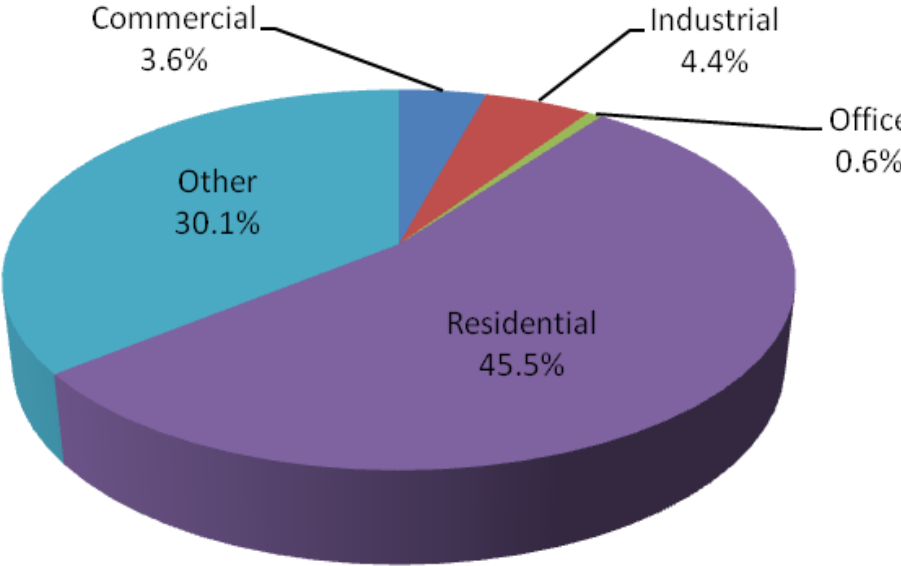
	1990		1999		2009	
	Acres	% of Total in City	Acres	% of Total in City	Acres	% of Total in City
<b>Developed Land</b>						
Residential	4,008	36.3%	4757	43.1%	5,010	45.4%
Commercial/Office	307	2.8%	421	3.8%	468	4.2%
Industrial	388	3.5%	436	3.9%	489	4.4%
Conservation, Parks, Roads	2,834	25.7%	2743	24.8%	3,349	30.3%
<b>Subtotal</b>	<b>7,537</b>	<b>68.3%</b>	<b>8357</b>	<b>75.7%</b>	<b>9,316</b>	<b>84.4%</b>
<b>Undeveloped Land</b>						
Residential	2,262	20.5%	1675	15.2%	956	8.7%
Commercial/Office	180	1.6%	177	1.6%	131	1.2%
Industrial	1,061	9.6%	831	7.5%	637	5.8%
<b>Subtotal</b>	<b>3,503</b>	<b>31.7%</b>	<b>2683</b>	<b>24.3%</b>	<b>1724</b>	<b>15.6%</b>
<b>Total Acres in the City</b>	<b>11,040</b>	<b>100%</b>	<b>11,040</b>	<b>100%</b>	<b>11,040</b>	<b>100.0%</b>

**City of Stow**  
**Developed Land Ratios 1999 & 2009**

**Developed Land 1999**



**Developed Land 2009**



**Stow-Munroe Falls School Enrollment  
1989-2011**

<b>School Year</b>	<b>Enrollment</b>	<b>% Change</b>
1989/1990	5,507	
1990/1991	5,463	-0.8%
1991/1992	5,690	4.2%
1992/1993	5,690	0.0%
1993/1994	5,771	1.4%
1994/1995	5,967	3.4%
1995/1996	6,051	1.4%
1996/1997	6,150	1.6%
1997/1998	6,105	-0.7%
1998/1999	6,075	-0.5%
1999/2000	6,001	-1.2%
2000/2001	5,982	-0.3%
2001/2002	5,973	-0.2%
2002/2003	5,967	-0.1%
2003/2004	6,076	1.8%
2004/2005	6,080	0.1%
2005/2006	5,930	-2.5%
2006/2007	5,994	1.1%
2007/2008	5,962	-0.5%
2008/2009	5,688	-4.6%
2009/2010	5,674	-0.2%
2010/2011	5,554	-2.1%

*Source: Stow Munroe Falls School District*